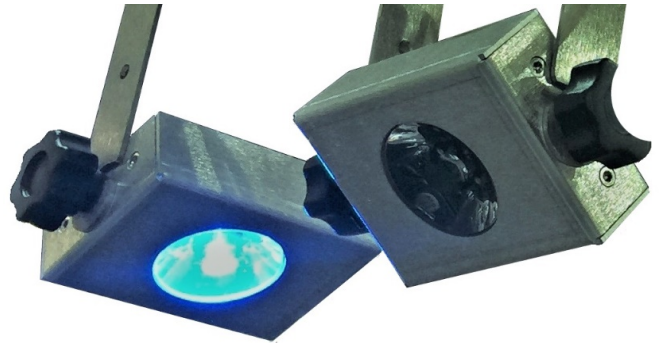




M
O
B
I
L
I
G
H
T



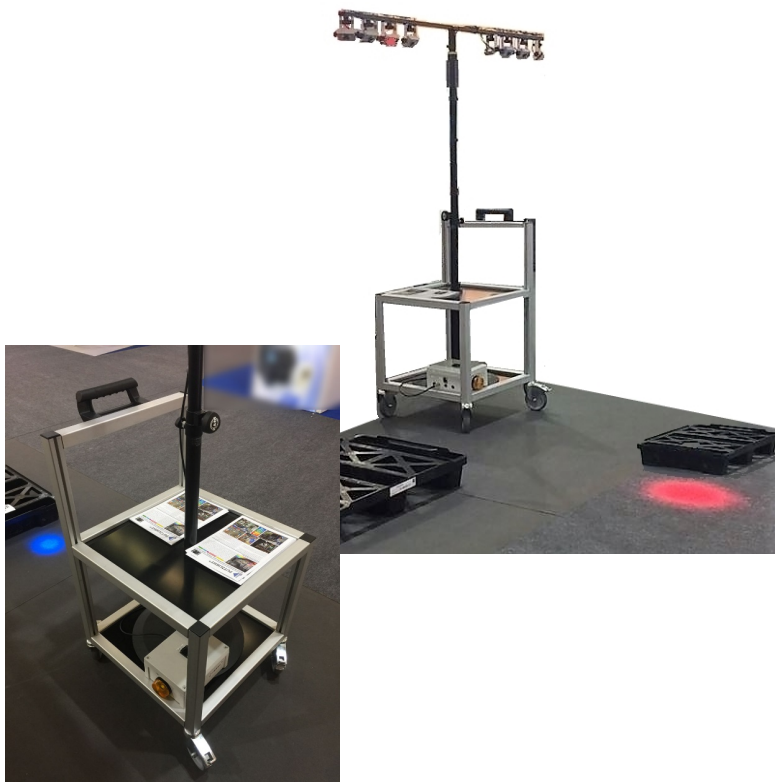
Light mast for multi-clients / multi-orders picking

ID SERVICES offers truly innovative PUT TO LIGHT solutions to handle all types of "multi-client" / "multi-command" picking : the result of meeting the needs of users in the field and the creativity of our engineers. Light bars, light masts, light "ceilings", light boxes, and many powerful, reliable, robust, ergonomic, durable, easy and quick to install solutions, capable of adapting to all your operating constraints. Their integration is simple and independent of WMS. Of excellent quality, entirely designed and manufactured in France, these solutions are durable, easy and inexpensive to maintain. And, they are much cheaper than the usual systems, also contributing to improving the working conditions of warehouse workers.

MULTI-CLIENT PREPARATION IN FULL LIGHT!

MOBILIGHT is a mobile system of luminous display for multi-customer preparation zones of reduced and variable surface. It allows identification in real time the correct pallet or place of deposition of the goods. Combined with portable, "hands-free", voice or on-board input terminals, this solution makes it possible to prepare orders simultaneously by "bursting" in a simple, intuitive and reliable way.

From pallet to pallet for the same product to be delivered, the system guides pickers to eliminate possible errors when positioning goods. Flexible and "nomadic" solution, it simply adapts to all configurations of small dispensing areas. During order picking, the pallets on which the collected products must be placed are designated on the ground by a coloured light specific to each picker, emitted by directive LEDs. The whole system is easily reconfigurable at any time: the preparation areas can evolve or change without any problem according to the operating constraints.



- The LEDs (maximum 12 per mast) are fixed on a small telescopic mast mounted vertically on a moving plate equipped with brakes. Each LED is independent and adjustable according to needs. This mobile solution therefore makes it possible to easily define and cover a limited geographical area for multi-client preparation.
- Adapts to any type of rolling table or other mobile device.
- Interfaces with any type of terminal (classic portable terminal, embedded or voice terminal, smartphone or tablet, under Windows or Android).
- An electronic box that controls the LEDs is installed on the turntable. It connects to the terminal via Bluetooth or directly in WIFI to the application server. This case contains two rechargeable batteries which offer the system a shift life of more than 8 hours.
- A specific software, using a proprietary communication protocol, drives the solution in real time.
- Can be associated with any type of additional peripheral (for example: one or two optional digital displays that indicate the quantities to be picked/dropped).
- Compliant with legislation: no risk of eye damage for operators.

For further informations, please visit our website :

www.put2light.fr

Visuels non contractuels dépendent du choix du chariot

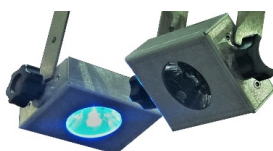
Caractéristiques techniques

MobiLight

Controller
ECOMLIGHT



LED Box



LED-PCB
(example)



Luminous display
(optional)



| | | | | |
|---|---|---|--|--|
| Description | Electronic controller LEDs and bright display steering WIFI and/or BLUETOOTH | Set of 4 or 8 adjustables LED boxes, with fixing system | High quality monochrome LED (blue, red, green, amber), assembled with optics on PCB ID SERVICES with regulator | Alphanumeric LED display 3 digits 16 segments |
| Dimensions (mm) | L 161 x l 81 x h 55 | depending of the set choosen | Diamètre 40 x h 23 | L 140 x l 40 x h 85 |
| Weight | 390 gr | depending of the set choosen | 22 gr per PCB LED | 500 gr per display |
| Outer material | ABS | Stainless steel + PMMA | PCB + PMMA lens 3° angle | Stainless steel + PMMA |
| Processor | Microcontroller 8 bits, microprocessor 64 bits Quad-Core ARM Cortex A53 à 1,2 Ghz Broadcom BCM2387 chipset | - | - | - |
| Memory (SDRAM) | 1 Go LPDDR2 | - | - | - |
| Writing / Reading unit | Micro SD card up to 32 Gb | - | - | - |
| Communication | WLAN WIFI 2,4 Ghz IEEE 802.11 b/g/n Sécurité : WEP, WPA, WPA2 Modes : STA/AP/STA+AP/P2P Protocole intégré sur stack TCP/IP Bluetooth 4.1 | - | - | - |
| Operating system | LINUX | - | - | - |
| Programming | PYTHON / Language C | - | - | - |
| Indicator lights | 1 charging LED Red/Green 1 flashing battery charge warning light < 20% | - | - | - |
| Buttons | 1 side On/Off push button | - | - | - |
| Battery | 2 x rechargeable Li-Ion of 12 VDC | - | - | - |
| Operating life | > 8 heures at + 20° C | - | - | - |
| Loading time (discharged battery 0%, 20-25° C) | Precise tests are being finalised | - | - | - |
| Operating temperature | - 20° C à + 50° C on BLUETOOTH - 25° C à + 50° C on WIFI + BT under review | 0° C à + 50° C | 0° C à + 50° C | 0° C à + 50° C |
| Storage temperature | - 30° à + 60° C | - 30° à + 60° C | - 30° à + 60° C | - |
| Power input | 110 - 230 VAC - 10 A / 24 VDC | 24 VDC | PCB 24 VDC (LED 3V) | 24 VDC |
| Power output | 24 VDC | - | - | - |
| Maximum consumption | 10 W | - | 3 W per LED | 10 W |
| Power supply connection / Communication | Input : 1 XLR female circular metal socket 3 poles Output : 3 circular 8 pole female metal socket | Input : cable with 1 aviation metal connector Gx16 8 pin male 16mm Output : cable with 1 aviation metal connector Gx16 8 Pin female 16mm | - | Input : cable with 1 aviation metal connector Gx16 8 pin male 16mm |
| Tightness | IP 68 | IP 65 | - | IP 65 |
| Restriction | Maximum 12 LEDS alimentées + 2 afficheurs | Maximum 12 LEDS par contrôleur | - | Maximum 2 afficheurs par contrôleur |
| Safety & regulatory conformance | This product meets the safety and regulatory criteria for normal use ENVIRONMENTAL: EU RoHS compliant; Chinese RoHS compliant | | | |
| Standard warranty | 1 YEAR | 1 YEAR | PCB 1 YEAR - LED LIFETIME | 1 YEAR |